

# PrepMaster® Chairside Protocol Reference Chart

For use in conjunction with the User Instructions, Clinical Brochure, Primer DVD, and supplementary material at [www.GromanInc.com](http://www.GromanInc.com)

**Pre-Treatment:** Determine extent of decay using radiographic and/or DIAGNOdent® type instruments.

**Post-Treatment:** Provide patient with the customary recommendations for care and maintenance.

## 1 Educate & Demo

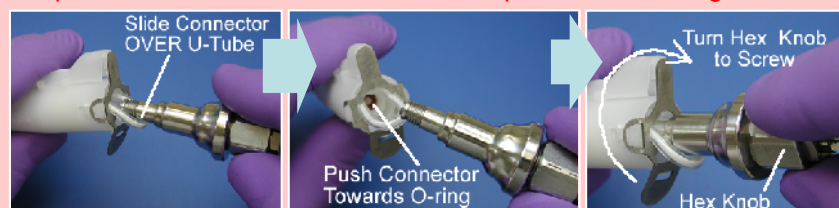
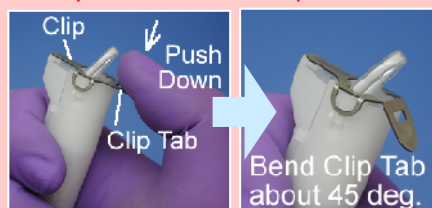
- ✓ **Educate** patient about advantages of air abrasion technology – no heat, no smell, minimal noise, no vibration, most likely no needles.
- ✓ **Demonstrate** to the patient the sound and feeling of the procedure using a light air-water spray from the assistants' air-water syringe.

## 2 Protect & Isolate

- ✓ Provide patient with **protective** eyewear.
- ✓ Use a rubber dam to **isolate** target area.
  - Mini-dams are appropriate if working in multiple quadrants.
  - Topical anesthetic may be required at the contact points with the rubber dam clamp.

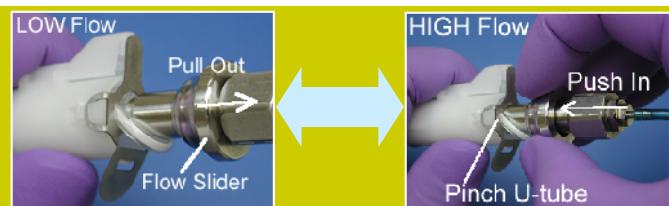
## 3 Bend & Screw

- ✓ Step 1 - **Bend** the PrepMaster® clip.
- ✓ Step 2 - **Screw** the connector into the PrepMaster® in O-ring direction.



## 4 Set & Orient

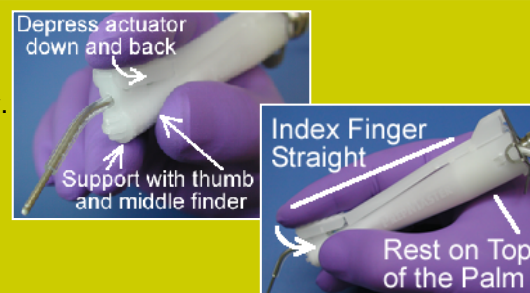
- ✓ **Set** the powder flow slider to the recommended setting from Reference Table below.
- ✓ **Orient** the PrepMaster® nozzle to the target surface in accordance with the Reference Table below.
- ✓ Always keep device pointing down.



Repeat Steps 4 & 5 as Required

## 5 Depress & Suction

- ✓ **Depress** the finger-tip control to initiate the abrasive stream.
- ✓ Continuous **suction** and air-water spray provides best results to reduce patient sensation and aerated powder, see Ref Table below.
- ✓ Keep the tip moving in a "brushing" motion across the selected tooth surface to achieve uniform depth and "blow" away decay.
- ✓ The closer the tip is to the surface, the narrower the preparation will be and the faster the tooth structure will be removed.
- ✓ Pause every few seconds to inspect the preparation depth.



## 6 Clean & Bond

- ✓ **Clean** the area with thorough washing and drying.
- ✓ Use of a caries detection solution is highly recommended for complete operator assurance of decay removal.
- ✓ \*Complete the restoration using your preferred **bonding** system and restorative material in accordance with the manufacturers' guidelines.
- ✓ Finishing is accomplished in accordance with your customary practice preferences.

Protocol Reference Table	Powder Flow Setting (for 80psi)	Suction Position	Mirror Position	Nozzle Position
Class I	Low	Opposing Spray	As Needed	Vertical or 5°-10° Angle
Class II**	Start HIGH Then LOW	Lingual or Palatal	Buccal Or Facial	Vertical Throughout Prep
Class III	Start HIGH Then LOW	Lingual or Palatal	Lingual Or Palatal	Perpendicular to Tooth
Class IV	Low	Incisal or Occlusal	Incisal	Vertical then Perpendicular
Class V	Low	Distal to Prep Site	As Needed	Perpendicular

*\*A flowable composite is indicated for small and narrow preparations. Care should be taken to avoid air bubbles trapped in the flowable composite or preparation.*

See [www.GromanInc.com](http://www.GromanInc.com) for more details.

**\*\* Class 2 preparations are possible for advanced users.**

**Compiled by the Clinical Directors of Groman Inc. Based on User Feedback** - Use of the PrepMaster® follows the same methods and procedures as any other air abrasion product. As with any new technique or product, careful reading of the User Instructions, practice, and CE Programs about Air Abrasion will improve both the patient and operator benefits from this technology.

Groman Inc. © 2004 Doc#K4-11-A

DIAGNOdent® is a trademark of the Kaltenbach & Voigt GmbH & Co.